

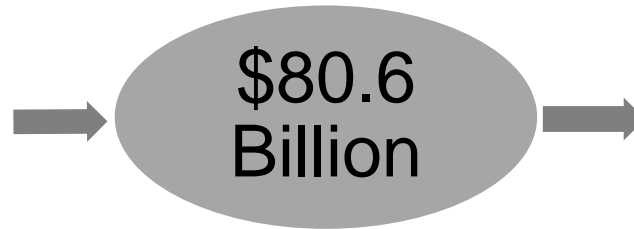
Local Control Funding Formula (LCFF) Statewide Fingertip Facts 2023–24 Fiscal Year – Second Principal Apportionment (as of June 2024)

Prepared by: CA Dept. of Education
School Fiscal Services Division

2023–24 AT A GLANCE

Funding Sources:

- \$47.6 Billion from State General Fund
- \$26.0 Billion from Local Revenue
- \$7.0 Billion from Education Protection Account (EPA)



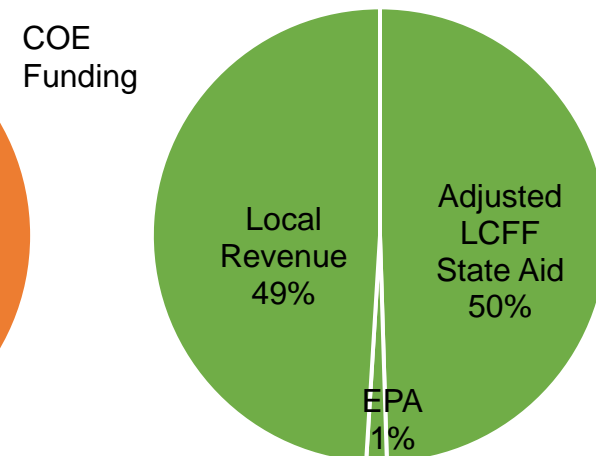
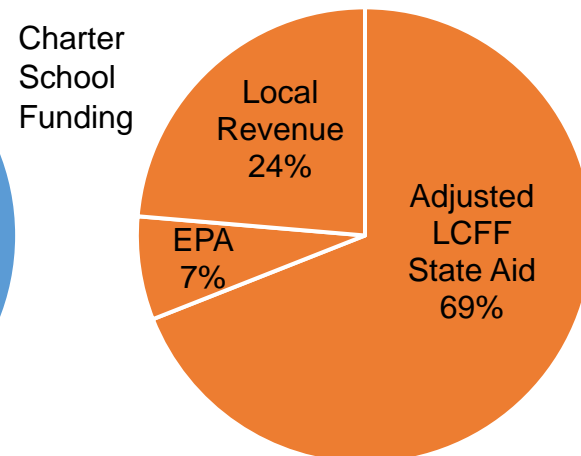
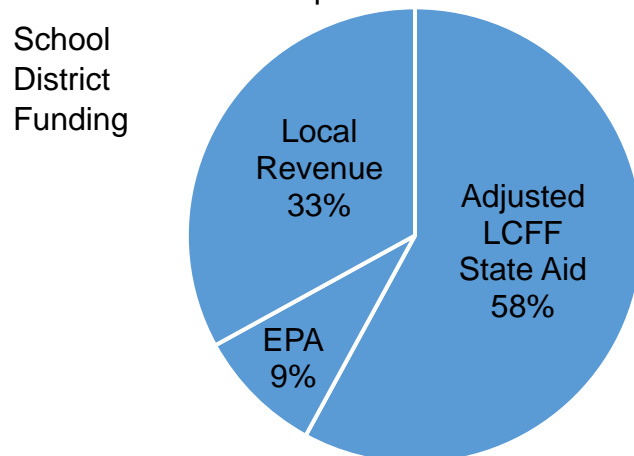
Funding Apportioned:

- \$70.0 Billion to School Districts
- \$9.1 Billion to Charter Schools
- \$1.5 Billion to County Offices of Education (COE)

LCFF Funding Detail

Sources	School Districts	Charter Schools	School District & Charter Subtotal	County Offices of Education	Statewide Total
LCFF State Aid before Minimum State Aid (MSA)	\$40,378,465,278	\$6,262,015,228	\$46,640,480,506	\$454,072,937	\$47,094,553,443
Additional State Aid for MSA Guarantee, Other LCFF State Aid for COEs	197,434,942	320,956	197,755,898	274,976,763	472,732,661
Adjusted LCFF State Aid (subtotal)	40,575,900,220	6,262,336,184	46,838,236,404	729,049,700	47,567,286,104
EPA State Aid	6,329,520,287	664,749,465	6,994,269,752	21,484,547	7,015,754,299
Local Revenue/In-lieu of Property Taxes ¹	23,104,790,543	2,146,299,879	25,251,090,422	721,823,160	25,972,913,582
Total LCFF Funding Sources	\$70,010,211,050	\$9,073,385,528	\$79,083,596,578	\$1,472,357,407	\$80,555,953,985

¹Amounts in table and pie charts do not include excess local revenue.



SCHOOL DISTRICT AND CHARTER SCHOOL DATA

Summary

LCFF Entitlement Component	District Count	% of Districts	District Funding	Charter Count	% of Charters	Charter Funding	Total Count	Total Funding
Base Grant Funding ²	903	96.3%	\$55,308,220,296	1,262	100.0%	\$7,493,602,578	2,165	\$62,801,822,874
Supplemental Grant Funding	938	100.0%	7,100,435,775	1,261	99.9%	940,305,408	2,199	8,040,741,183
Concentration Grant Funding	575	61.3%	5,454,130,567	787	62.4%	591,521,442	1,362	6,045,652,009
Necessary Small School (NSS) Allowance	110	11.7%	144,495,411	n/a	n/a	n/a	110	144,495,411
Add-on Funding	934	99.6%	1,760,738,388	658	52.1%	47,635,144	1592	1,808,373,532
Miscellaneous Adjustments ³	6	0.6%	-603,055	0	0.0%	0	6	-603,055
State Aid for MSA Guarantee	152	16.2%	197,434,942	8	0.6%	320,956	160	197,755,898
Total LCFF Entitlement⁴	n/a	n/a	\$69,964,852,324	n/a	n/a	\$9,073,385,528	n/a	\$79,038,237,852

²Some school districts are fully funded through NSS and do not receive Base Grant Funding; some charter schools have no Base Grant Funding due to zero funded ADA.

³Adjustments for special legislation, instructional time penalties, and class size penalties.

⁴Total LCFF Entitlement is less than Total LCFF Funding Sources (shown on page 1) due to EPA State Aid minimum guarantee.

Ten Largest School Districts (based on Funded ADA)

School District Name	ADA	UPP
Los Angeles Unified	375,224.97	85.65%
San Diego Unified	91,155.73	59.47%
Fresno Unified	64,859.91	88.46%
Long Beach Unified	63,767.93	64.13%
Elk Grove Unified	59,130.88	51.78%
Corona-Norco Unified	49,105.94	69.75%
San Francisco Unified	47,263.12	59.59%
San Bernardino City Unified	43,841.33	91.52%
Capistrano Unified	41,770.68	32.79%
Clovis Unified	40,317.58	48.33%

Ten Largest Charter Schools (based on Funded ADA)

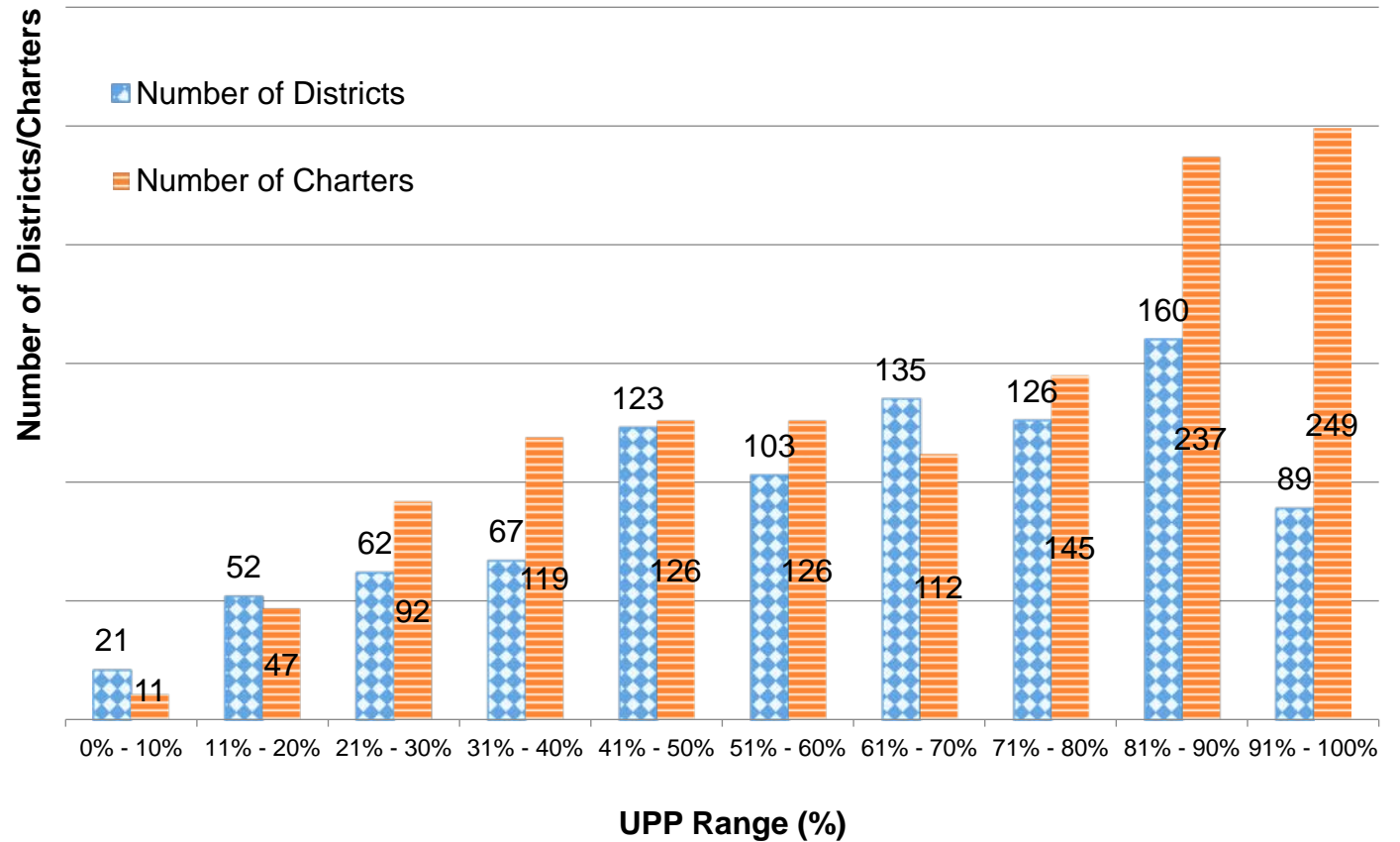
Charter School Name	ADA	UPP
River Springs Charter	7,213.37	58.45%
Blue Ridge Academy	6,853.30	41.69%
Visions In Education	6,747.70	56.03%
Highlands Community Charter	5,923.20	99.04%
Granada Hills Charter	5,701.25	50.74%
Mission Vista Academy	5,650.79	42.61%
Pacific Coast Academy	5,600.30	38.79%
California Virtual Academy @ Los Angeles	5,549.73	75.15%
Heartland Charter	5,531.37	43.87%
California Connections Academy Southern California	4,896.08	52.38%

Total Funded ADA by Grade Span (includes NSS ADA)

LEA Type	Number of LEAs	Grades TK/K-3	Grades 4-6	Grades 7-8	Grades 9-12	TOTAL ADA
School Districts	938	1,497,861.45	1,131,574.61	761,008.82	1,599,969.85	4,990,414.73
Charter Schools	1,264	185,640.69	138,345.77	109,134.01	238,197.09	671,317.56
TOTAL	2,202	1,683,502.14	1,269,920.38	870,142.83	1,838,166.94	5,661,732.29

Unduplicated Pupil Percentage (UPP) Ranges for School Districts and Charter Schools

UPP Range	District Count	Charter Count
0% - 10%	21	11
11% - 20%	52	47
21% - 30%	62	92
31% - 40%	67	119
41% - 50%	123	126
51% - 60%	103	126
61% - 70%	135	112
71% - 80%	126	145
81% - 90%	160	237
91% - 100%	89	249
Total	938	1,264



COUNTY OFFICE OF EDUCATION DATA

LCFF Funding Summary

LCFF Entitlement	Number of COEs	Amount
Funding Based on LCFF Target ⁵	47	\$793,176,519
Funding Based on “Hold Harmless” provisions of <i>EC</i> Section 2575(g)(2)	11	\$403,510,339

⁵Final determination of LEAs funded at the LCFF Target is made at the Second Principal (P-2) Apportionment.

LCFF Target Entitlement Calculation

LCFF Target Components	Number of COEs	Amount
Base Grant Funding	54	\$177,714,393
Supplemental Grant Funding	49	54,858,488
Concentration Grant Funding	49	23,911,534
Alternative Education Grant (subtotal)	n/a	\$256,484,415
Operations Grant Funding	58	832,401,235
Add-on Funding	56	51,799,752
Total LCFF Target Entitlement	n/a	\$1,140,685,402

Alternative Education Grant Average Daily Attendance (ADA)

ADA Type	ADA
Non-Juvenile Court School ADA	7,053.36
Juvenile Court School ADA	3,785.95
Total County Funded ADA	10,839.31

Unduplicated Pupil Percentage (UPP)

UPP Type	UPP
Average UPP (Non-Juvenile Court School)	74.98%
Lowest non-zero UPP (Non-Juvenile Court School)	49.15%

Additional State Aid

Additional State Aid Component	Number of COEs	Amount
Additional State Aid for Minimum State Aid Guarantee	22	\$156,412,226
State Aid Pursuant to <i>EC</i> Section 2575.1	24	8,947,868
State Aid Pursuant to <i>EC</i> Section 2575.2	58	99,466,669
State Aid Pursuant to <i>EC</i> Section 2575.3	23	10,150,000
Total Additional State Aid	n/a	\$274,976,763